

Construction Sequence

	Year																				
	1	2	3	4	5	6	7	8	9	10	11	12	13	14	15	16	17	18	19	20	
Johnson County Gateway Interchange	Project 1 - Yellow Project																				
	Project 2 - Orange Project*																				
	Project 3 - Green Project*																				
	Project 4 - Red Project*																				
I-435 & US-69 Interchange	I-435 & US-69 Red Project*																				
	I-435 & US-69 Purple Project*																				

* Pending future programming decisions, design, right-of-way, and utility relocations.

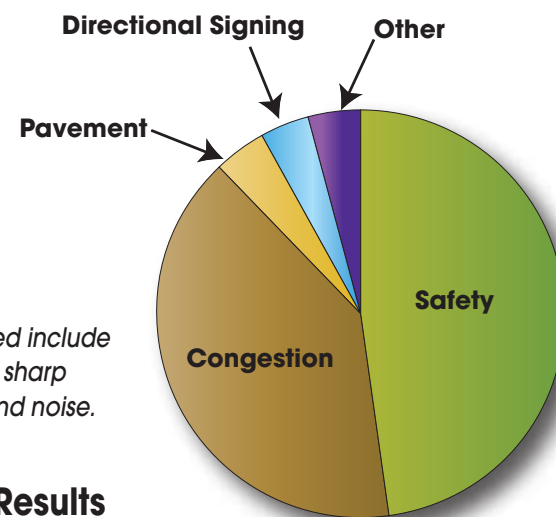
Stakeholder Outreach

Supporting the study effort is an extensive stakeholder engagement process with the following activities included:

- Community interviews
- Electronic newsletters
- Website: www.jocogateway.com
- Blog
- Facebook page
- On-line surveys
- Public meetings
- Community presentations
- Public official briefings
- Advisory group
- Media relations
- Workshops

Online Survey Issues and Concerns

The issues identified as more or most important from the online survey are:



Other issues identified include bike/ped crossings, sharp cloverleaf design and noise.

Focus Group Results

- 100% generally liked the preferred concept.
- 92% of participants felt local street access was adequate.
- 97% of participants were willing to pay something to fund improvements for Gateway.

Future Level of Service

Traffic is projected to increase 60 percent by 2040; that means areas with congestion today will just get worse if no improvements are made.

- 230,000 vehicles drive through the interchange today with that number projected to increase to 360,000 by 2040.
- A drive through the interchange during the peak PM our that should only take three minutes without congestion, actually takes four minutes today and is projected to take 16 minutes by 2040.
- 10 percent of the interchange operates in congested conditions today with that percentage growing to 50 percent by 2040.

The Johnson County Gateway: I-435/I-35/K-10 interchange is one of the most congested interchanges in the state. The economic vitality of the region relies on the continuity and efficiency of the transportation system. That is why the Kansas Department of Transportation has developed plans for safety and traffic improvements in this area.

The study team developed a design concept and recommendations for improving the interchanges by analyzing traffic, land use and stakeholder input. The study is expected to be completed by early 2011.

The team prioritized improvement recommendations and developed a phased construction plan to allow the ultimate concept to be completed over time. Additional projects and coordination with the US-69 project will create efficiency and cost savings.

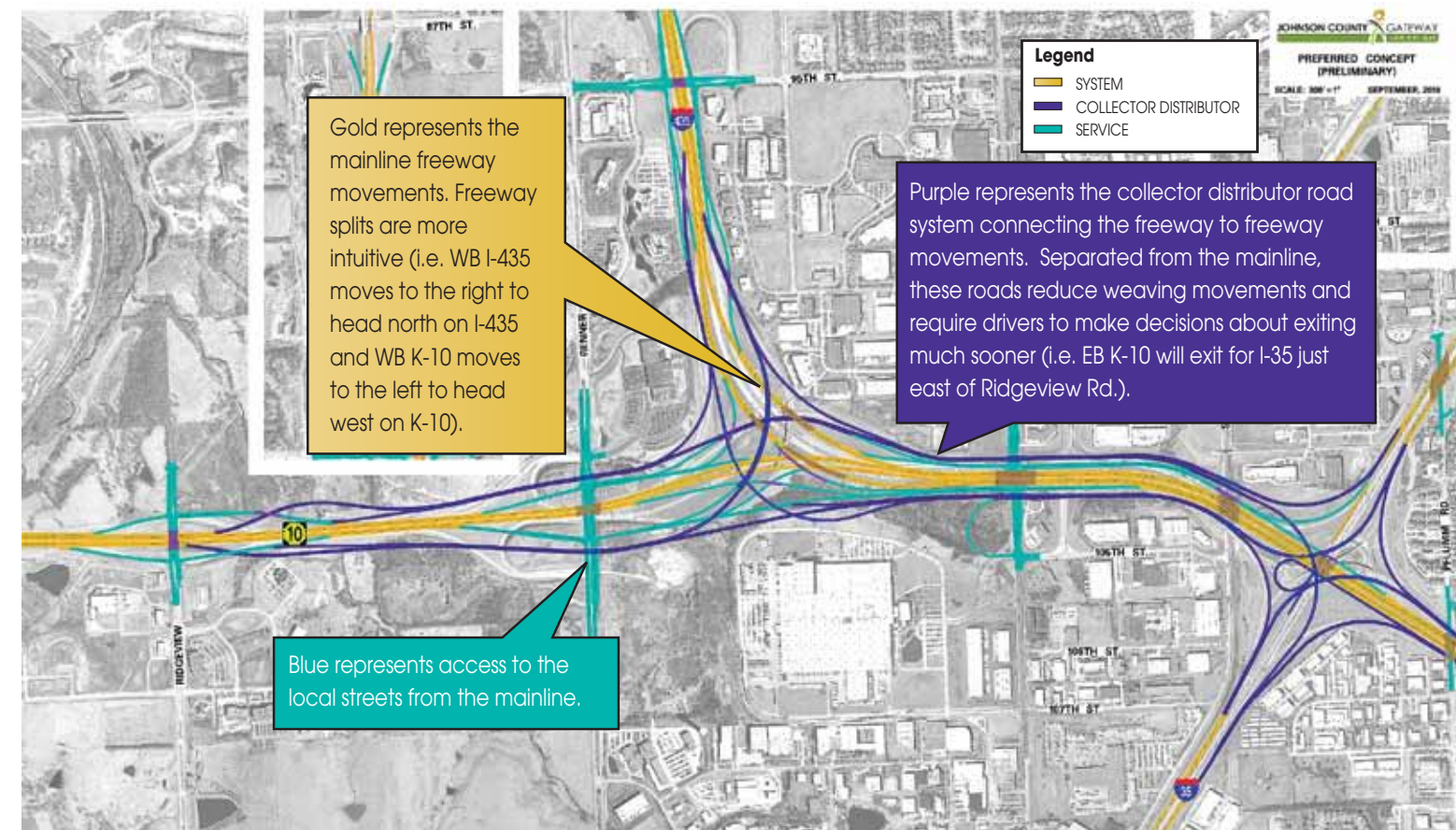
Study Overview

Goal: Develop an ultimate design concept and prioritized recommendations that improve the safety, mobility and efficiency of the Johnson County Gateway: I-435/I-35/K-10 interchange.

Schedule: Concept Study to be completed by early 2011.

- Phase 1 - Evaluate existing and future conditions;
- Phase 2 - Determine feasible alternatives and develop an ultimate concept, and
- Phase 3 - Prioritize improvements and identify interim, cost-effective solutions for existing problems.

Study Partners: KDOT, the Mid-America Regional Council, Johnson County, Lenexa, Olathe, Overland Park, and the Federal Highway Administration.



Contact Information: www.jocogateway.com or e-mail jocogateway@hntb.com

Scott King
KDOT Project Manager
785.296.6970
sking@ksdot.org

Kimberly Qualls
KDOT Public Affairs
785.296.3881
kqualls@ksdot.org

Joe Brand
HNTB Project Manager
913.491.9333
jbrand@hntb.com



The Gateway Project Phasing Approach

Project 1 - Yellow Project

The Yellow Project will address the back-up of traffic on the existing WB I-435 to SB I-35 flyover ramp. It will also address the heavy SB and NB I-35 traffic between 119th Street and I-435.

Project 2 - Orange Project

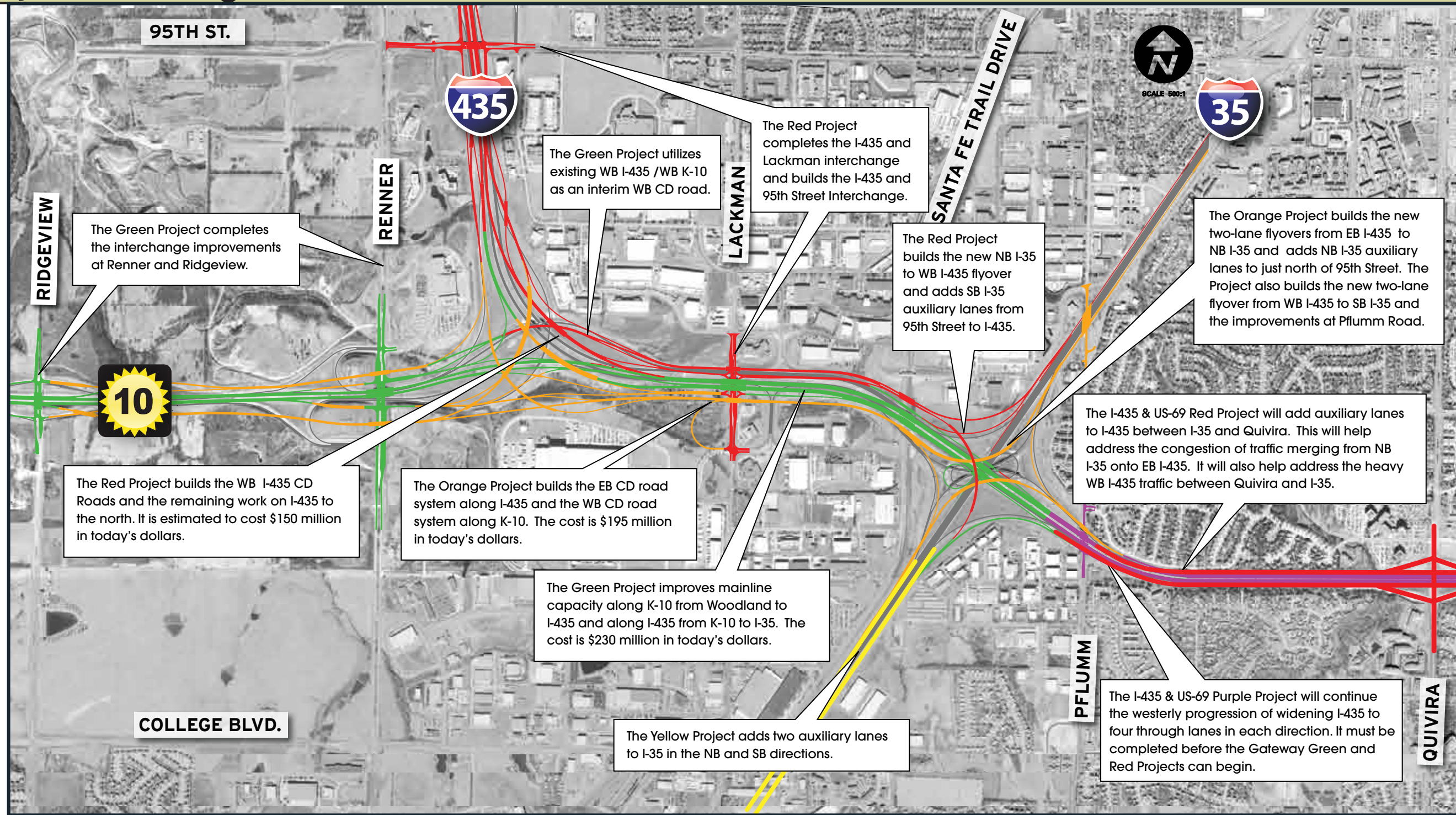
The Orange Project will address the EB traffic congestion between where K-10 and I-435 come together to where vehicles exit to I-35. It will also address the heavy traffic on NB I-35 just north of I-435.

Project 3 - Green Project

The Green Project in combination with the Orange and Yellow Projects addresses nearly 80% of the future anticipated problems within the interchange area.

Project 4 - Red Project

The Red Project completes the improvements addressing all the remaining traffic issues identified within the interchange area.



Economic Benefits

Yellow Project and the I-435 & US-69 auxiliary lanes of the red project on I-435 between I-35 and Quivira:

- \$800+M of additional Gross Regional Product plus Traveler Benefit
- CREATION of 1300+ jobs

Total Gateway Project: (All Orange, Green and Red)

- \$1.2+B of additional Gross Regional Product plus Traveler Benefit
- CREATION of 3500+ jobs

The economic analysis evaluates several factors to develop these benefits, but it is worth noting:

- These benefits are based on the comparison of two situations; the **Build** and **No-Build** situations.
- These are the benefits in year **2035**, but are reported in **2010** dollars (basically, it's a look in the future, but in current dollars).

- Approximately 1300 or 3500 jobs can be **directly** attributed to the construction of the project in question.
- These numbers are a result of improved travel time, congestion relief, safety improvements, improved reliability, and expansion of markets areas.
- Finally, these are **PERMANENT** jobs, not simply construction jobs, while construction jobs are created, they are not reported in these numbers.